

# Production Worksheet

Wilcom EmbroideryStudio – Level 3 Advanced



Design: CR 557 2x2  
 Colorway: Colorway 1

Stitches: 4954  
 Colors: 5  
 Height: 45.0 mm  
 Width: 50.3 mm  
 Zoom: 1:1



Machine: Tajima  
 Color changes: 4  
 Stops: 5  
 Trims: 9  
 Left: 25.2 mm  
 Right: 25.2 mm  
 Up: 22.5 mm  
 Down: 22.5 mm  
 EndX: 0.0 mm  
 EndY: 0.0 mm  
 Max Stitch: 11.5 mm  
 Min Stitch: 0.2 mm  
 Max Jump: 6.5 mm  
 Total Bobbin: 9.29m

Stop Sequence:

#	N#	St.	Description	Code	Brand
1.	1	564		1801	Madeira PolyNeon 40
2.	5	389		1932	Madeira PolyNeon 40
3.	2	1438		1023	Madeira Classic 40
4.	3	2506		5	Wilcom
5.	4	55		1317	Madeira Classic 40



# Production Worksheet

Wilcom EmbroideryStudio – Level 3 Advanced



Design: CR 557 4x4

Colorway: Colorway 1

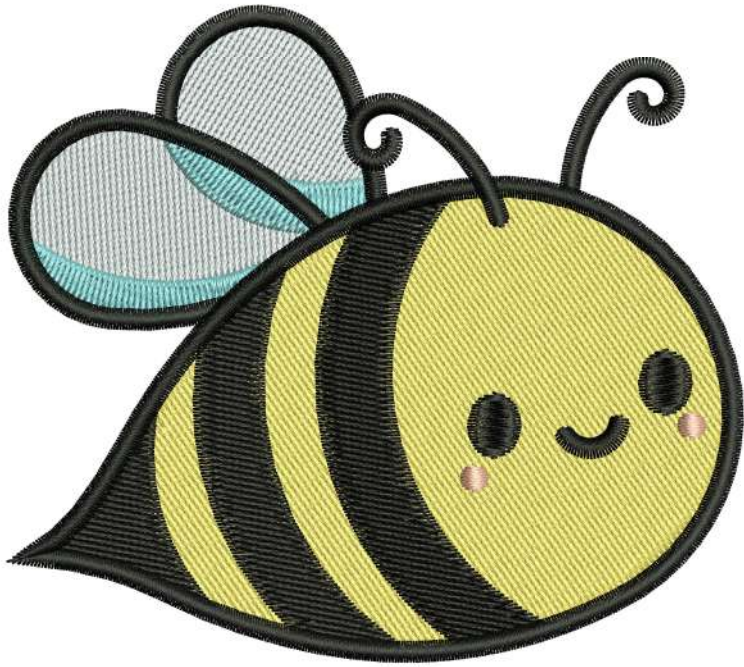
Stitches: 12640  
Colors: 5  
Height: 87.0 mm  
Width: 97.4 mm  
Zoom: 1:1



Machine: Tajima  
Color changes: 4  
Stops: 5  
Trims: 9  
Left: 48.7 mm  
Right: 48.7 mm  
Up: 43.5 mm  
Down: 43.5 mm  
EndX: 0.0 mm  
EndY: 0.0 mm  
Max Stitch: 6.5 mm  
Min Stitch: 0.2 mm  
Max Jump: 6.6 mm  
Total Bobbin: 31.79m

Stop Sequence:

#	N#	St.	Description	Code	Brand
1.	1	1673		1801	Madeira PolyNeon 40
2.	5	880		1932	Madeira PolyNeon 40
3.	2	4474		1023	Madeira Classic 40
4.	3	5543		5	Wilcom
5.	4	68		1317	Madeira Classic 40



# Production Worksheet

Wilcom EmbroideryStudio – Level 3 Advanced



Design: CR 557 6X6  
 Colorway: Colorway 1

Stitches: 24050  
 Colors: 5  
 Height: 132.6 mm  
 Width: 149.1 mm  
 Zoom: 0.84



Machine: Tajima  
 Color changes: 4  
 Stops: 5  
 Trims: 9  
 Left: 74.6 mm  
 Right: 74.5 mm  
 Up: 66.3 mm  
 Down: 66.3 mm  
 EndX: 0.0 mm  
 EndY: 0.0 mm  
 Max Stitch: 8.5 mm  
 Min Stitch: 0.2 mm  
 Max Jump: 6.9 mm  
 Total Bobbin: 69.70m

Stop Sequence:

#	N#	St.	Description	Code	Brand
1.	1	□ 3495		1801	Madeira PolyNeon 40
2.	5	■ 1621		1932	Madeira PolyNeon 40
3.	2	■ 9376		1023	Madeira Classic 40
4.	3	■ 9455		5	Wilcom
5.	4	■ 101		1317	Madeira Classic 40

