

# Production Worksheet

Wilcom EmbroideryStudio – Level 3 Advanced



Design: WGS 21 4x4

Colorway: Colorway 1

Stitches: 26266

Colors: 10

Height: 97.3 mm

Width: 57.7 mm

Zoom: 1:1



Machine: Tajima  
Color changes: 9  
Stops: 10  
Trims: 24  
Left: 28.9 mm  
Right: 28.9 mm  
Up: 48.7 mm  
Down: 48.7 mm  
EndX: 0.0 mm  
EndY: 0.0 mm  
Max Stitch: 11.2 mm  
Min Stitch: 0.1 mm  
Max Jump: 7.6 mm  
Total Bobbin: 39.67m

### Stop Sequence:

#	N#	St.	Description	Code	Brand
1.	10	2358		1932	Madeira PolyNeon 40
2.	5	2030		1980	Madeira PolyNeon 40
3.	7	336		1228	Madeira Classic 40
4.	6	388		1988	Madeira PolyNeon 40
5.	9	785		1176	Madeira Classic 40
6.	3	2152		1272	Madeira Classic 40
7.	2	2281		1986	Madeira PolyNeon 40
8.	4	799		1994	Madeira PolyNeon 40
9.	8	3118	White	15	Wilcom
10.	1	12017		1	Wilcom



# Production Worksheet

Wilcom EmbroideryStudio – Level 3 Advanced



Design: WGS 21 5x7

Colorway: Colorway 1

Stitches: 55969

Colors: 10

Height: 174.3 mm

Width: 103.3 mm

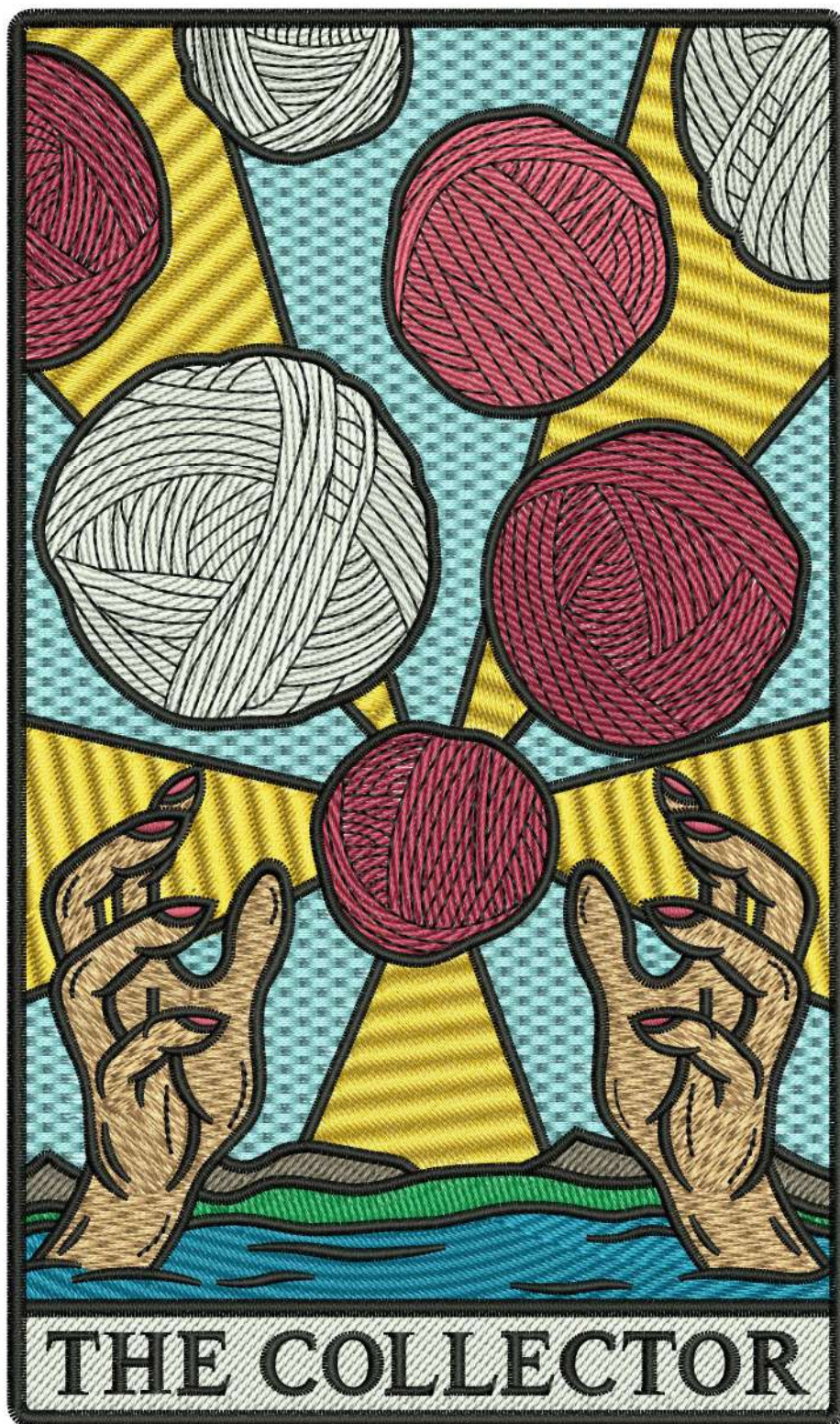
Zoom: 1.17



Machine: Tajima  
 Color changes: 10  
 Stops: 11  
 Trims: 25  
 Left: 51.6 mm  
 Right: 51.6 mm  
 Up: 87.2 mm  
 Down: 87.2 mm  
 EndX: 0.0 mm  
 EndY: 0.0 mm  
 Max Stitch: 11.7 mm  
 Min Stitch: 0.2 mm  
 Max Jump: 7.3 mm  
 Total Bobbin: 106.52m

Stop Sequence:

#	N#	St.	Description	Code	Brand
1.	10	4739		1932	Madeira PolyNeon 40
2.	5	4880		1980	Madeira PolyNeon 40
3.	7	738		1228	Madeira Classic 40
4.	6	846		1988	Madeira PolyNeon 40
5.	9	2353		1176	Madeira Classic 40
6.	3	4845		1272	Madeira Classic 40
7.	2	5424		1986	Madeira PolyNeon 40
8.	8	5549	White	15	Wilcom
9.	4	2021		1994	Madeira PolyNeon 40
10.	8	2107	White	15	Wilcom
11.	1	22465		1	Wilcom



# Production Worksheet

Wilcom EmbroideryStudio – Level 3 Advanced



Design: WGS 21 10x10

Colorway: Colorway 1

Stitches: 94061

Colors: 10

Height: 254.2 mm

Width: 150.0 mm

Zoom: 0.81



Machine: Tajima  
Color changes: 12  
Stops: 13  
Trims: 28  
Left: 75.0 mm  
Right: 75.0 mm  
Up: 127.1 mm  
Down: 127.1 mm  
EndX: 0.0 mm  
EndY: 0.0 mm  
Max Stitch: 10.7 mm  
Min Stitch: 0.1 mm  
Max Jump: 7.1 mm  
Total Bobbin: 209.07m

### Stop Sequence:

#	N#	St.	Description	Code	Brand
1.	10	8768		1932	Madeira PolyNeon 40
2.	5	8940		1980	Madeira PolyNeon 40
3.	2	9465		1986	Madeira PolyNeon 40
4.	8	10629	White	15	Wilcom
5.	4	3857		1994	Madeira PolyNeon 40
6.	1	16775		1	Wilcom
7.	7	1270		1228	Madeira Classic 40
8.	6	1474		1988	Madeira PolyNeon 40
9.	9	4434		1176	Madeira Classic 40
10.	3	8747		1272	Madeira Classic 40
11.	2	604		1986	Madeira PolyNeon 40
12.	8	4072	White	15	Wilcom
13.	1	15024		1	Wilcom

